

The **POWER** *of* **PETS**



LARIMER HUMANE SOCIETY

2023 *ANNUAL REPORT*

MISSION

To further the compassionate, safe, and responsible relationship between animals and people.

VISION

Larimer Humane Society is a trusted, responsive community leader, providing programs and services essential to the high quality of life for animals and people in northern Colorado.

VALUES

OPEN ADMISSION

As an open door shelter, we believe all animals deserve a safe place to go for shelter and care.

SERVICE

We believe that our role is to serve our community, both animals and people, with respect, dignity, empathy, and kindness.

ETHICAL BEHAVIOR

We will exercise the highest standards of ethics in all our actions, fostering a culture of transparency, accountability, honesty, and fiduciary responsibility.

COLLABORATION

We believe our mission is best fulfilled through the exchange of ideas, talents, and contributions while practicing good and thoughtful communication.

SAFETY

We are committed to the safety of animals and people in our community and workplace.



A Letter From Our **CEO & BOARD CHAIR**

We often speak of our shelter's incredible staff, volunteers, and steadfast supporters when reflecting on a year's accomplishments. Those who serve and carry out our mission to ensure quality animal welfare services in northern Colorado are, of course, the driving force behind the positive impact we have achieved and for which we continue to strive.

Yet, in all our endeavors, it is the animals themselves, the heart and soul of our organization, who deserve our utmost admiration. They possess an exceptional resilience that is nothing short of extraordinary. Whether they are rescued from a harrowing hoarding situation, nursed back to health from a debilitating disease, guided through an unfamiliar world as a stray, or simply using our shelter as a safe haven until they find their next home, the animals are the unsung heroes of our shelter.

And the best part? Our beloved animals' impact and inspiration travels far beyond the shelter walls. We have the honor of serving and caring for adaptive geckos, talkative birds, and intuitive dogs, and when they're adopted, we see them thrive and inspire even more as members of the community. After a long day, it is our pets' offering of companionship that puts a smile on our face. Your dog's head on your lap, your cat's soothing purrs, or your bird's bright medley —

whatever it may be, your pet provides comfort, life lessons (for better or for worse!), and companionship beyond compare. At Larimer Humane Society, we work to heal, protect, and nurture the animals in our community, allowing them, in turn, to illuminate our lives with their brilliance and unconditional love.

It is through our collective efforts that we create a world where these remarkable beings can thrive, inspire, and teach us to be better humans. Together, we can make a lasting difference in their lives, just as they have made an incredible impact on ours. Let us walk forward with compassion, knowing that by serving them, we are creating a brighter future for all.

Sincerely,



Judy Calhoun
Chief Executive Officer



Geneve Huxley
Board Chair



OUTREACH & IMPACT

The **HOARDING** **CASE** *of Weld County*

In 2023

6,610

animals received care

3,871

families created

1,492

families reunited

81%

*of stray dogs
reunited with family*

22%

*of stray cats
reunited with family*

12 days

*was the average
length of stay*

In the spring of 2023, Larimer Humane Society became a beacon of hope for more than 150 dogs rescued from a single home in Weld County. Overwhelmed by fear, social anxiety, and living in squalor, these small Chihuahua mixes were in dire need of a lifeline. With unwavering commitment, our shelter stepped forward, taking in the largest share of these dispirited animals to provide them with care, compassion, and the second chances they so desperately needed.

This incident unfolded in two distinct phases, the first occurring in March when more than 50 dogs were surrendered to Larimer Humane Society and a neighboring shelter. Twenty-two of those dogs were welcomed into our care. A month later, during a follow-up visit to the home of the surrendered dogs, a regulatory officer from the Colorado Department of Agriculture found an alarming scene — countless dogs were still on the premises. The officer issued a cease and desist order, resulting in the removal of 95 additional dogs from the residence. Larimer Humane Society was called on to assist with gathering and transporting these vulnerable pets to local animal welfare organizations — 35 of which were transported to our shelter in Loveland. In total, 58 dogs were brought to Larimer Humane Society from this single home in Weld County.

The road to recovery

As we took on the responsibility of caring for these precious pups, our shelter staff worked tirelessly to nurture, heal, and to simply acclimatize the dogs to the presence of people. Upon their rescue, the dogs were in a deplorable state, their trembling bodies a testament to the trauma they had endured. Socialization was foreign to them, and basic training was nonexistent. It was evident that a significant amount of Tender Loving Care (TLC) would be required to prepare them for a “normal” home environment, and a brighter future.

Behavior & Enrichment *in 2023*

291

*animals were enrolled in
“Pets Needing Patience”
program*

Behavioral assessments revealed that none of the dogs were leash or house trained, and they became easily distressed when approached by staff. They were enrolled in our Behavior Team’s training and socialization programs and made noticeable progress after only two weeks of specialized care. Our volunteers also pitched in, socializing the dogs by reading to them, petting and cuddling (as they allowed), and training them to walk on leash.

Our Foster Care Volunteers played a crucial role for several of the dogs who needed extra time and a quieter space to recover. One of the dogs in particular would freeze and shake when a new person walked in the room. Her Foster Care Volunteer spent hours every night petting and showing her how safe she was. It took time, but by the end of the foster stay, this dog would sit in her foster’s lap and ask for more pets with a gentle paw.

Foster Care *in 2023*

585

*animals were cared
for by foster families*



*Evaluation, care, and **moving forward***

In addition to behavioral intervention and TLC, our Veterinary Services Team conducted thorough medical evaluations on each dog, leaving no stone unturned in their pursuit of comprehensive care. We detected dental disease in one-third of the dogs and performed surgery to remove decaying teeth, in addition to spaying and neutering the majority of the surrendered pets. Along with these surgeries, vaccines were administered to all dogs to ensure good health moving forward. Our staff did, however, assess that several of the dogs — after years of sordid living conditions and lacking for medical care — had severe health issues that compromised their quality of life and prevented them from living pain-free. To end their suffering, they were humanely euthanized.

A final investigation conducted by the State led to an arrest on 174 counts of animal cruelty, an offense with which Larimer Humane Society's Animal Protection & Control Officers are all too familiar with. However, for the majority of these rescued dogs, their journey's end was a loving home. Thanks to the tireless efforts of our incredible staff, volunteers, and the support of our community, we were able to transform the lives of 58 dogs, guiding them from a place of fear and neglect to one of love, care, and peace. This poignant journey reminds us of the vital role our organization plays in providing resources, expertise, and unwavering care to those who need it most. Together, we can continue to make a difference in the lives of vulnerable animals and ensure that their next chapter is one filled with love, joy, and a sense of belonging.

*Veterinary Services **in 2023***

9,188

vaccinations given

2,151

surgeries performed

*Animal Protection & Control **in 2023***

20,786

responses to calls

1,880

strays at large

1,331

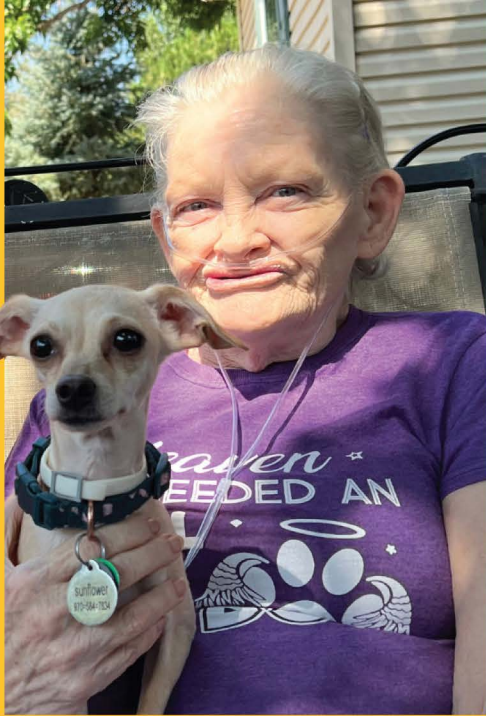
strays in custody

937

barking complaints

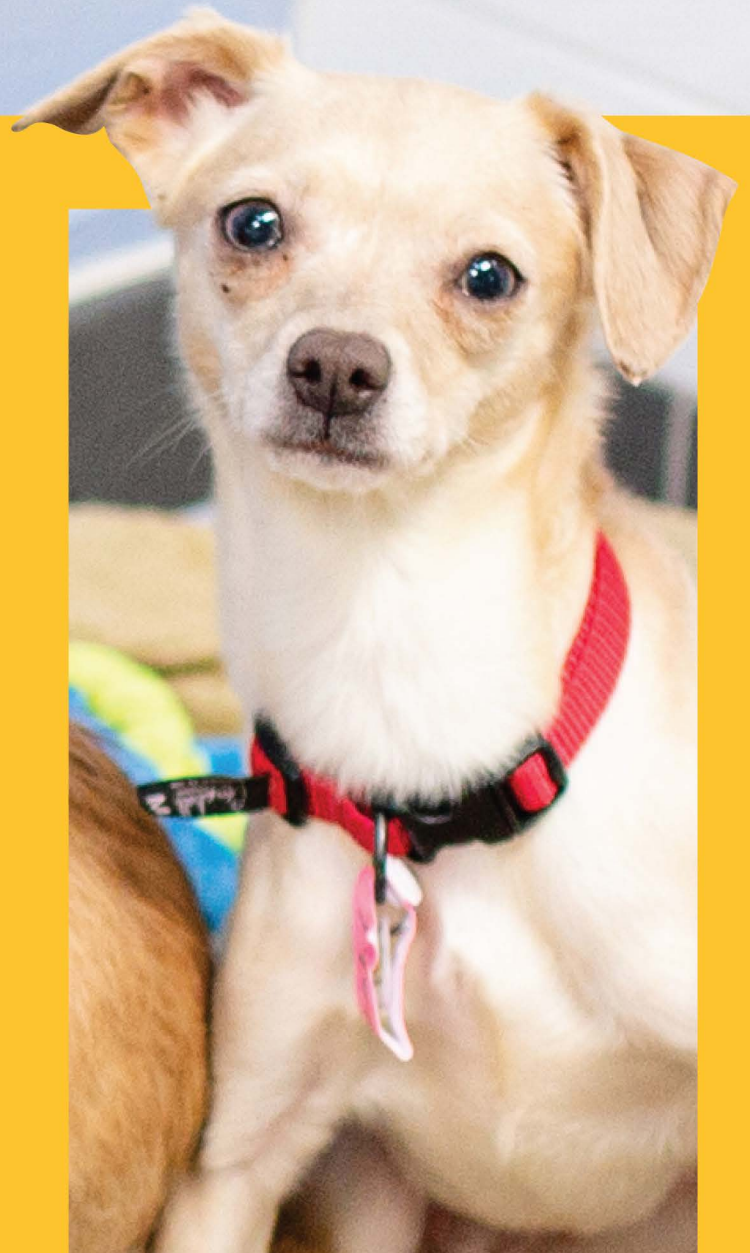
1,073

bite cases



*Sunflower and **Kathy***

Meet Sunflower! After being transferred to Larimer Humane Society from the hoarding situation in Weld County, she found a loving companion in Kathy. Sunflower was adopted by Kathy in late spring and they have been inseparable ever since. Not long before, Kathy lost her previous dog to old age, who was her rock during the pandemic. Kathy was in the market for another small dog to fill that void, and after reading about the rescued Chihuahuas in one of our newsletters, she adopted Sunflower soon afterward. Sunflower is settling in well and has created great relationships with her dog siblings.



Larimer Humane Society to Provide Animal Welfare Services in Weld County

On June 6, 2023, the board of the Humane Society of Weld County announced that the organization will dissolve and transfer its assets to Larimer Humane Society. As of October 2, Larimer Humane Society will assume full responsibility for providing animal services to Weld County.

For more than 50 years, Larimer Humane Society's donors and enthusiastic supporters have been instrumental in expanding compassionate care for animals throughout the community. We eagerly anticipate this continued partnership as we embark on the next phase, creating an even greater impact serving the pets and people of northern Colorado.

JANUARY

Humane Society of Weld County leadership reaches out to regional shelter partners seeking support in the face of a disease outbreak in the shelter.

FEBRUARY

Humane Society of Weld County's intake limitations create a significant impact on Larimer Humane Society, where 20% of the calendar year's animal intake comes from Weld County.

MARCH

Larimer Humane Society steps in to help handle the hoarding situation in Weld County involving more than 150 dogs.

APRIL

Larimer Humane Society supports Humane Society of Weld County with supplies, counsel, and animal transfer assistance. Leadership of both organizations recognize that larger strides are needed to address the demand for animal services in Weld County.

MAY

Larimer Humane Society Board of Directors votes to expand services into Weld County. Humane Society of Weld County leadership decides to dissolve the organization and transfer assets to Larimer Humane Society, effective October 2, 2023.

JUNE

Larimer Humane Society publishes a press release announcing the change to animal welfare service in Weld County.

JULY & AUGUST

Larimer Humane Society begins hiring and training approximately 35 new employees to staff the Weld County shelter located in Evans.

SEPTEMBER

Larimer Humane Society reveals a new name and logo to reflect a broader geographic scope of services.

OCTOBER

Service transition takes place on October 2, 2023. Humane Society of Weld County officially dissolves.



MORE TO COME!

Scan here to follow our journey and learn about future developments.



SHELTER STATISTICS

INTAKE

	Cats	Dogs	Rabbits	Birds	Reptiles	Small Mammals	Barnyard Animals	Total
Stray	1,454	1,413	60	62	33	72	6	3,100
Owner Surrender	781	958	113	189	135	448	0	2,624
Transfer	144	55	3	29	14	101	0	346
Return	62	122	9	2	1	9	0	205
Protective Custody	44	100	0	3	29	0	0	176
Born at Shelter	55	19	15	0	0	36	0	125
Confiscate	2	27	5	0	0	0	0	34
Total Intake	2,542	2,694	205	285	212	666	6	6,610

OUTCOMES

	Cats	Dogs	Rabbits	Birds	Reptiles	Small Mammals	Barnyard Animals	Total
Adoption	1,650	1,114	166	198	134	606	3	3,871
Return to Owner	310	1,149	4	14	12	2	1	1,492
Euthanasia	225	330	6	26	4	45	0	636
Disposal	189	34	5	4	1	4	2	239
Transfer	77	32	1	28	4	0	1	143
Died	31	8	16	4	27	4	0	90
Owner Surrender	4	8	0	0	19	0	0	31
Missing	0	2	0	0	0	1	0	3
Total Outcomes	2,486	2,677	198	274	201	662	7	6,505

SERVICES PROVIDED

	Cats	Dogs	Rabbits	Birds	Reptiles	Small Mammals	Barnyard Animals	Total
Microchips	3	10	0	0	0	0	0	13
Medical Services	4	10	0	0	0	1	0	15
Lost Reports	474	204	0	8	3	1	0	690
Home Reports	609	376	9	9	3	1	0	1,007
Disposal Request	29	51	3	8	4	1	0	96
Spay/Neuter Surgery	5	0	2	0	0	0	0	7
End of Life Services	136	341	1	7	2	43	0	530
Total Services	1,260	992	15	32	12	47	0	2,358





33RD ANNUAL • SPRING CANYON PARK
LARIMER HUMANE SOCIETY

We would like to extend a big thank you to everyone who supported the 33rd Annual Fire Hydrant 5K & Expo on June 3, 2023 — brought to you by Poudre Pet & Feed Supply! Even though it rained cats and dogs, we had a fantastic turnout and were joined by more than 800 humans and furry friends. Thanks to you, this event raised more than \$97,000 to support homeless and vulnerable animals in northern Colorado, which is an all-time high in Fire Hydrant 5K history!



PLATINUM

Cash
Freeman



petfirst
Pet Insurance
a MetLife Company

GOLDEN RETRIEVER



Fort Collins Veterinary Emergency
and Rehabilitation Hospital

GOODTIMES
ALL NATURAL BURGERS
FROZEN CUSTARD



SILVER WEIMARANER

Erin LeVan, State Farm 970-372-2919 • Houska Automotive • Raising Cane's
 NOCO Style • VCA Fort Collins Animal Hospital and Urgent Care

BRONZE BASSET

Animal Friends Alliance • Burt's Logo Apparel • Dellenbach Subaru
 Discover Life Chiropractic • Four Seasons Veterinary Specialists
 Kaiser Permanente • Neenan Archistruction • OtterCares Foundation
 Pioneer Press • Runner's Roost • Wagz Pet Market & Grooming

SPECIAL THANKS

Colorado Laser Engraving • Fort Collins Police Services K9 Team
 Fort Collins Running Club • Penske Truck Rental • StickerGiant
 Santiago's Mexican Restaurant • The Human Bean



24TH ANNUAL
 TOP CAT & TAILS GALA

MIDNIGHT in PAWRIS

In October of 2022, we welcomed more than 300 guests at the Embassy Suites in Loveland for our 24th Annual Top Cat & Tails Gala — "Midnight In Pawris." Presented by Hill's Pet Nutrition, Horizon Mechanical Solutions, and Poudre Pet & Feed Supply, our generous community helped raise \$190,000 to support and care for homeless animals in northern Colorado. Thank you to those who joined and supported this event — your impact means the world to our animals in need.

PRESENTING



PLATINUM



GOLD



Fort Collins Veterinary Emergency
and Rehabilitation Hospital



SILVER

ERIN LEVAN, STATE FARM 970-372-2919
 MIDTOWN VETERINARY MEDICAL CENTER

BRONZE

ANIMAL ARTS ♦ APEX SHREDDING, INC. ♦ BANK OF COLORADO
 CREST INSURANCE GROUP ♦ NOCO STYLE MAGAZINE



FINANCIALS

REVENUE

Operating Revenue		
Contracts	\$2,166,059	37%
Shelter Services	\$1,455,015	25%
Development	\$2,255,718	38%
Total Operating Revenue	\$5,876,792	100%
Total Other Revenue	\$1,463,970	100%
<i>(including unrealized gains and losses)</i>		

EXPENSES

Animal Care	\$2,526,391	44%
Animal Protection & Licensing	\$1,228,458	21%
Veterinary Services	\$568,862	10%
Development, Community Outreach & Administration	\$1,479,861	25%
Total	\$5,803,572	100%

STATEMENT OF FINANCIAL POSITION

Cash Assets	\$1,113,324
Investments	\$13,523,117
Fixed & Other Assets	\$16,533,765
Total Assets	\$31,170,206
Total Liabilities	\$12,498,940
Net Assets	\$18,671,266
Total Liabilities & Net Assets	\$31,170,206

Audited financials available upon request.



PET LICENSING

OUR PARTNERS

- Advanced Animal Care
- Animal Friends Alliance
- Animal Hospital of Colorado
- Animal Hospital of the Rockies
- Animal Medical Center of Estes Park
- Aspen Grove
- Blue Sky
- Boyd Lake Veterinary
- CLPVC
- Campus West
- Chappelle Animal Hospital
- City Park AC
- Colorado Veterinary Care
- Coyote Ridge
- Dark Horse Vet Services
- Family & Friends
- For the Love of Cats
- Fossil Ridge Animal Hospital
- Friendship
- Front Range VC
- Happy Cats (Dr Monika Connally)
- Loveland VC
- Midtown
- Moore
- Mulnix
- Paws N Claws
- Paws of the Rockies
- Poudre Feed Stores
- Raintree
- South Mesa Veterinary Hospital
- Timberline Animal Hospital
- The Meadows Veterinary Center
- Twin Peaks Veterinary Clinic
- Wellington VC
- Worthington

PETS LICENSED

-  **50,807** CATS & DOGS
-  **33** CHICKEN COOPS (Fort Collins)
-  **2** GOATS (Loveland)

OUR DONORS

HERITAGE CIRCLE

Heritage Circle members have made a lasting impact for animals by including Larimer Humane Society in their estate planning. Members are able to enroll their pets in the Pet Guardianship program, providing temporary foster care with Larimer Humane Society in case of the member's incapacity or death. For more information about the Heritage Circle and Pet Guardianship program, contact us: development@larimerhumane.org / 970.530.2948

Sherry Adamson	Linda Davidson and Trudy Costello	Nancy Krieger Hennessy	Irene Moose	Nancy J. Smith
Shelley Amicone	Katherine and James Dow	James and Dana Hiatt	Sherrie Norman	Jane Sullivan
Norma Andersen	Mary Duvane	Kent A. Hotchkiss	Chad and Edie Parker	Carole and Mike Thorsrud
Dori Aravis	Carole Egger	Carol and Harvey Hotto	Lauren and Ben Parsons	Nancy and Dave Timmons
Susan and Logan Bailor	Tina Evans	Gene and Susan Humphries	Yvonne Pedersen	Leslie Walker and Dale Puce
Mary Baldwin	Martha Faulk and Ray Hogler	Deborah Ann John	Marjon Pekelharing and Govert Koetsier	John O. Walker and Patricia L. Steele
Janet Baynton	Patricia Forlenza	Carol Jones and Diane Peters	James and Jerilyn Perkins	Margie Walling
Clayton and Jane Benton	Lili Francuz and Michael Loughlin	Marjorie Kennedy	Marcia Piermattei	John and Marcie Wells
Dennis and Mickey Bookstaber	Carolann Frisco	Patricia B. Kingsbury	John E. Roberts*	Joanne Wilson
Sally Bowden	Rob and Karen Gaiennie	Wanda Koch	Larry and Sheri Roos	Wendy Woods
Judith A. Calhoun	Natalie Goffredi	Mary Kolesnyk and Robert Heer	Susan Rostvedt-Johnson and Craig Johnson	Sallie Youngman
Matthew Cartier	Carol and Harry Halac	Dani C. Korkegi	Jodi and Brad Schilling	Anonymous (19)
Roberta Cipriano and Lula Callahan	Frances M. Hale	Jill Kreutzer and Leigh Towill	Sheila and Tim Schmidt	
Ann Clarke	Karen Jensen Halualani*	Michele Lier	Gary and Leanna Schranz	
Leslie Collins	Keith Hardes	Richard J. Luebs	Susan Shattuck	
Lola M. Cook	Steve and Jackie Harris	Jim and Marsie Mattern	Allison L. Sheldon	
Leone Coryell	Lois B. and Arnold Hart	Cate Meyer and Cap Smith		
		Ron and Jill Michaels		

FOUNDATIONS

AmazonSmile	Dorothy McCartney Designated Fund	Odell Family Fund	The Mary Elizabeth Bates Foundation
Animal Assistance Foundation	Hummel Family Foundation	OtterCares Foundation	The Shelby Family Foundation
Ben C. Delatour Foundation	John Webb Charitable Lead Trust	Petfinder.com Foundation	Von Voigtlander Family Foundation
Block Communications, Inc	Jorgensen Family Foundation	Rhianna Schilling Memorial LLC	Wags and Menace Make a Difference Foundation
Church & Dwight Employee Giving Fund	Louis and Anne Abrons Foundation, Inc.	Shell Oil Company Foundation	Anonymous (2)

COMMUNITY & BUSINESS PARTNERS

Airport Boat and RV Storage	Embassy Suites Loveland Hotel, Spa and Conference Center	Kaiser Permanente	Purple Peony Inc. (Jackie's Java)
Animal Arts	Erin LeVan, State Farm 970-372-2919	Kohl's	Raymond James Charitable Fund
Animal Friends Alliance	Forma Furniture	Kroger	Raising Cane's
Apex Shredding, Inc	Fort Collins Dodge Chrysler Jeep Ram	Loveland/Estes Park Bowling Association	Rosetta Studio
Arkins Park Stone Corporation	Fort Collins Veterinary Emergency & Rehabilitation Hospital	Markley Motors	Runners Roost
Bank of Colorado	Four Seasons Veterinary Specialists	Midtown Veterinary Medical Center	Seistronics, Inc.
Bark Busters	Good Times Burgers & Frozen Custard	Mountain Time Vacation Rentals	Sierra Trading Post
BarkDine Innovations	Grace Place	Neenan Archistruction	Target Corporation
Bear-Lair	Hank's Pet Food Market	Nicholas H. Ores, Attorney at Law	The Lyric
Bulldog Carpet Cleaning	High Country Beverage	NOCO Style Magazine	The Stone Garden
Burt's Logo Apparel	Hill's Pet Nutrition, Inc.	Pedersen Toyota - Volvo	Tuesday's Natural Dog Company
CARS (Charitable Adult Rides & Services)	Home2 Suites by Hilton Fort Collins	Pelican Lakes Resort and Golf	Tuesday's Natural Dog Company
Chad's Silversmithing	Horizon Mechanical Solutions	Peppy's Pet Shoppe	VCA Fort Collins Animal Hospital
Cina & Cina Forensic Consulting, P. C.	Houska Automotive Services Inc.	PetFirst Pet Insurance, a MetLife Company	VCA Veterinary Specialists of Northern Colorado
Crest Insurance Group	Implant and General Dentistry of Northern Colorado	Pioneer Press	Wagz Pet Market & Grooming
Dellenbach Motors	Jewelry Emporium	Pitcher Trucking Co.	WaterPik
Ditesco		Poudre Pet & Feed Supply	Anonymous
Elements Massage		Premier Skin Clinic	

ESTATES & BEQUESTS

P.A. Cessnun Foundation	Alfred K. Frommhold Charitable Trust	Sharon Metcalf	Marilyn A. Schweizer Trust	The Estate of Christine M. Sykes
The Estate of Karen L. Fowler	The Karen Jensen Halualani Trust	J. Edward Schamberger Trust	Robert Stoker Living Trust	Anneliese and Walter Zimmerman Fund

CIRCLE OF CHAMPIONS

STEADFAST SUPPORTERS \$10,000+

Judy Calhoun and Cheryl Weill	Lois and Arn Hart	Karen Horak and Karen Morris	Diane and Ronald Sutton	Weston and Erin Whittington
Mary Jane Bryan and Donald J. Simon	Sylvia and Asher Haun	Jodi and Brad Schilling	Robert Warmack	Anonymous
Carole Egger				

LOYAL LEADERS \$5,000 - \$9,999

Linda Anderson
Cyndi Brown
Deborah Buonassisi
Cynthia and Ron Carrington

John and Sally Conway
Catherine Cross
Donald and Lucile Henricks
Deborah and James Horst

Jean Wilkerson Huebsch
Patricia Kingsbury
Natalie Knowlton
Cindy Lee

Robert Perkins
Marcia L. Piermattei
Jacquiline Rohrbacker
Susan Shattuck and Timothy Gallagher

Deb and Vic Stauffer
Wendy Woods
Anonymous (3)

PET PROTECTORS \$2,500 - \$4,999

Damon Abeyta
Leighanne and Wes Alford
Margie and Richard Bell
Victoria Buchan
Bobbi Cipriano and Lu Callahan
Donna Clayton-Lee and James Lee
Eileen and John Crystal
Ali Eccleston

Nanci Garnard
Stacy and Steve Gentry
Joe Glaser
Vivian and Jim Gniady
Robert Gregory
Darren Haun
Fred Herrmann
Dana and James Hiatt

Kayla Horne
Sally Korshak
Erin and Chris LeVan
Michele Lier
Rex and Lonna Miller
Kathryn and Charles Morganti
Margaret Olsen
Nicholas H. Ores

Mark and Kristi Pedersen
Michael Perry
Susan and Eric Peterson
Anne and Doug Rogers
Barbara and Ron Schneider
Sean and Tiffany Serell
Josh and Kay Shelby
Naomi and Bradley Suinn

Jane Sullivan
Fred and Jean Ann Swinson
Nancy and Dave Timmons
Chris and Chuck Ulfers
Carolyn Wagner Snyder
Karla Younessi
Donna and Eugene Ziehm
Anonymous (3)

SHELTER STARS \$1,000 - \$2,499

Bradley D. Abrams
Rita and Charles Adams
Pam Allen
Gwenette M. Andersen
Betty and Richard Anderson
Cheryl Anderson
Jill Anderson and Toby Clary
Kevin Anderson
Shari Arduini
Charles and Lynne Armstrong
Darlene and Merle Atwood
Holly Baker and Lloyd Rowe
Nancy and Scott Baker
Judy Baringer
Richard and Claudia Barrett
Laura and Todd Barthol
Neil Batchelor
Jacqueline and Thomas Bennett
Karin Bierstein and Giles Morris
Robert Birnbaum
The Block Family
Kathy Bolinsky
Kathleen and Eric Bracke
Judy and Doug Brobst
Kerry Brookman
Robert T. Browne
Nick and Kelsey Bukowski
Karel Bunce
Nancy Bureau
Timothy Burke
Lauren Bussey
Julie and Jim Campain
Denise and Rick Chapman
Jesse Chavez
Tracey and Jerry Chevalier

Ellie and James Chinn
Stephen and Julie Cina
Liana and Robert Clark
Cindi and Hans Coester
Nicol and Kurt Colicchio
Leslie Collins
Heidi and Randy Cooksey
Elise Gingrich and Michael Costello
Rose Craigo
Steven and Karen Cruise
Laurie and Kayla Cure
Mabelle and Bruce Dalton
Linda Davidson and Trudy Costello
Katie and Jeff Davis
Marilyn and Al Davis
Nicole De Haven-Malik
Jaclyn and Jeff Deaner
Paul and Courtney Duffy
Tanya and Steven Dutro
Kay Eberl
Mary Jane Elkins
Susan and Jackson Ellis
Betsy and Tom Ellison
Katharine Ellison
Catherine and Pedro Engel
Matthew and Amy Felumlee
Jessica and David Ferguson
Harry and Elizabeth Fiechtner
Robbie and Rich Fisher
Kenneth French
John and Christine Frey
Susie and Jim Fuller
John Gandy
Geri and Dennis Georg
Sharon Gillette, D.V.M.

Nancy J. Gimeno
Gary Graves
Barbara Green
Jennifer Hand and Ross Heikes
Robert Hards
Susan and Richard Harrison
Richalie Hecht
Cheryl and Tom Heger
Kathleen Henry
Mary M. Hills
Sara Hoffman and Randy Myers
Shelley Hofmann
John and Jennifer Houska
Vicki Jameson
Ray Jenkins
Christine and Ken Jobe
Kathy and Hans Jorgensen
Pamela Kauffman
Kimberly and Stephen Keen
Karen and David Kendall
Sukhi Khera and Karamjeet Pandher
Jerry and Tammie King
Wanda Koch
Deborah and Michael Kocsis
Amy Kolczak
Kimi Kondo and Carol Avery
Kathy Kregel and Jim Smith
Jill Kreutzer and Leigh Towill
Chris and Ericka Lake
Jack Landon
Molly Lauterbach
Adrienne LeBailly
David and Trish Lerner
Norma Lloyd
Kathleen Lockwood

Dianna Luce
Daniel MacKinnon
Brenda Mahoney
Brianna Mason
Diane and Bob Mason
Marsie and James Mattern
Lisa McCarthy
Katherine McElroy
Jack and Liz McGrew
Barbara and Stewart McPherson
Christopher and Stefanie Mecklenburg
Joseph and Martha Melody
Larry Melton
Keith and Colleen Meyer
Andrew and Angela Milewski
Jeffrey and Patricia Moser
Steve and Judy Nardie
Carolee Novak and Steven Shevenock
William O'Deen
Michael and Deanne Olson
Carla Otto
Cynthia Owens
Ann and Eric Pederson
Jerilyn and Chris Perkins
Jan and Miles Poteet
Cynthia Quick and Les Thurman
Harland Ranney
Jamie and Lance Reisman
Jane and William Repert
Almina Ringdahl
Sheri and Larry Roos
Sharon Ruch
B. Lynne Sage
Marjorie and Donald Schafer
Peter Schmid and Nancy Levinger

Al Schumacher
Ali and Jon Semonchick
Kristi and William Shaffer
Mary and Donald Shivers
Pamela Simons
Greg Smith
Nancy J. Smith and John Musa
Hilary Stacey
Adam Steele
Chris Stewart
Donna Sullivan
Skye Summerain
Camille Susemihl
Christopher and Michelle Swanson
Sarah Swanty
Diane Tarnoff
Jo Tatti and Ian Turnbull
Corinne and Craig Thomas
Carole and Michael Thorsrud
Cindy Townsend
Francine and D. Timothy Webb
Wendy Weisler
Gail Werth
Jean Williams
Timothy and Candy Wirt
York
Sallie Youngman
Michael Yourshaw*
Pam Zaske and Julie Tolleson
Anonymous (26)

ANIMAL ADVOCATES \$500 - \$999

Theodore and Sophie Aldrich
Mrs. Archambault
Kathy Bacon
Janet Bailey
Nancy Baker
Sheena Banks
Heather Barcomb
Rebekkah Beeco
Connie Begger
Katherine Belford
Jeanne Berryman
Lee Birgenheier
Jim Bolick
Joan and Richard Bowen
Gary and Beverly Briggs
Kara and Dan Brown
Margaret Brown and Anthony Kleibecker

Brian Buckmaster and Susan Williams
Barbara Bulgart
Laura and Kenny Bunch
Laurine and Wallace Burke
Mary Carlson
Gerald and Allison Chen
Jane and Robert Choate
Doraleen Cochran
Debbie Cockreham
Susan and Charles Coffey
Georgia and Jeffrey Cole
Patricia Cone
Leone Coryell
Lynn and Karen Courtney
Dollie and Tom Cromwell
Michael and Pamela Dahl
Charles and Marthann Dahlen

Karen and Kent Davis
Danny DeGroat
Judi and Charles Dekle
Richard and Julie Depperman
Kristen Devoto and Mark Bottemiller
Adrienne Dieball
Kathy and Merlin Dietz
Tara and Mike Dinsmore
Sonya and Ron Dixon
Jeanne Dodd
Stephanie Doughty
Karen and Michael Douglas
Kathy and Jim Dow
Mary Duvane
Joan Eaton
Jane Elijah
Doug Ell and Leanne Vanboven

Connie Ellis
Linden Ellis and Sarah Gomez
Valerie Ellis
Judy and Dennis Ellzey
Katy and Paul Evertson
Daniel Ferguson
Amy and Richard Fillingier
Wendy and Kirk Fisher
Jayme Fjeseth Coleman
Robert and Samantha Flood
Shelly and James Flores
Karen M. Folger
William Follis and Marilyn Pultz
David and Sherry Followill
Cheryl Fox
Liliane Francuz and Michael Loughlin
Michael and Hillary Freeman

Carolann Frisco
Ross Fryer
Nancy and Fred Garcia
Kathleen and Bill Gargan
Kathleen Glasser
Sarah Glesmann
Sharon and Gary Greathouse
Charles and Madeline Greeb
Zachary Green and Natalie Giarratano
Bob and Carol Greene
Sara and Greg Halac
Shannon Hall
Layne Halliday
Alan and Jean Hammond
Sharon Haner
Ann and Richard Hanson
Gina Harper

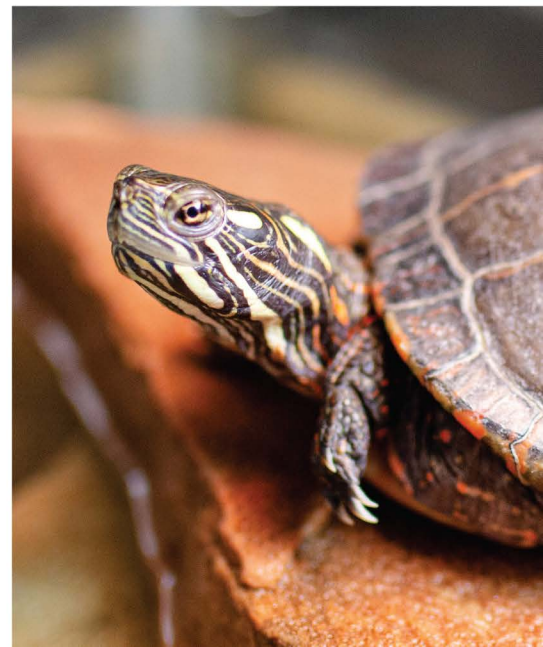
ANIMAL ADVOCATES *continued*

Brianna Havlik
 Randy and Karen Heckman
 Michelle Heiken
 Jim Helzer
 Patricia and Leland Hendrie
 Mary Hinman
 Linda and William Holt
 Brent and Justine Hopton
 Virginia Horst
 Shellie Howard
 Dana Howk
 David Hula
 David and Elizabeth Hulslander
 Pat Hunt
 Janice and Jim Jackson
 Michele and Matt Jacoby
 Ray and Janice Jacoby
 Dan and Daniel Jennings
 Kim Jones
 Thomas Jones
 Torii Kapavik
 Rebecca and Larry Kawa
 Kalianna Keels
 Scott Kellman
 Susan Kenney
 Debra and David Kepler
 Steven Kiepe
 Ariana and Dolly Kiessling
 Bonnie King
 Alyson Kinkade
 Mary Klein
 Jane Koepp
 Craig and Niki Kozak
 Jeff and Diana Koziel
 John Kramb
 Dede and Steve Kraxberger
 Ryan Kuzyk
 Christina and Steve Lang
 David and Diana Larson
 Robert Lathrop
 David Lestrud
 Arlene Libby
 Susan Lilly
 Kathy and Tom Lindsay
 Gwen Lisella-Smith and Greg Smith
 Kelly Ann Long
 Patricia Lundberg
 LaVeta Luther
 Susan and Ernest MacQuiddy
 Russell and Susan Magarity
 Lindsey and Laura Mai
 David and Tasha Marchant
 Nancy Martin
 Carly Martinez
 Shari and Mark Massey
 Michelle McCartney
 Timiry and Jason McCaskell
 Pamela and Rich McCombs
 Kirk and Ashley McGilvray
 Kathleen and Ken McNaught
 Kathy Merlo
 Anne Messerli
 Ron and Jill Michaels
 Noreen Middlebrooke
 Melanie and Dennis Middlemist
 Clarence R. Milster
 Douglas and Karen Moore
 Reverend Joseph Moore and Dr. Shelley W. Moore
 Cheyne Morgan and Brianna Riggio
 Lindsay Morgan
 Charles Morsbach
 Dominic and Glenda Motta

Betty Muench
 Amanda Myers
 Ashley Nason
 Beverley Nurse
 Corkie Odell and Mike Sollenberger
 Nicholas Oelsner
 Molly Oestreich
 John Olienik
 Howard and Peggy Olsen
 Josh and Lee Lee Olson
 Scott and Jane Olson
 Scott Omdahl
 Joel and Janna Osofsky
 Ted Ost
 Cathy Ow and Roger Ashmore
 Holly Paisier
 Lisa Pallotti
 Kara and Neil Pappas
 Chad and Edie Parker
 Ms. Ramila B. Patel
 Marcia Paterson
 Vincent and Deanne Pecora
 Marjon Pekelharing and Govert Koetsier
 Caitlyn and Andrea Pendolino
 Michelle and Walter Peterscheck
 Marci Peterson and Patti Palagi
 Rita Peterson
 Dan and Suzanne Petla
 Renee and Monty Phillips
 Roger Ping
 William Plummer
 Eks Pollock
 Lyn and Jim Pring
 Sandy L. Quakenbush and Joel Rovnak
 Linda and George Raw
 Melodie and John Ream
 Gary Rechnitz
 Joe and Connie Reding
 Sandra and Gregg Rene
 Amelia and Jose Rivera
 John Roberts*
 Arba Robinson
 Luis Robinson
 Christine Rock
 Charles and Judy Rogers
 Jamie Roskie and William Anderson
 Susan Rostvedt-Johnson and Craig Johnson
 Denise Rutherford and Maurice Kuypers
 William Rutledge
 Adam Ryan
 Roxane and Leo Salazar
 Danny Sandoval and Lori Feig-Sandoval
 Betty and James Sanford
 Janet Sauter
 Dennis and Linda Schick
 Lanny and Lanae Schlitt
 Brigitte Schmidt and Jim Madl
 Pamela and Stephen Schwartz
 Virginia Scofield
 Pamela Sessler
 Scott and Pamela Sheeler
 Glenn and Barb Shull
 Barbara Siek
 Kerry Slater
 Shellie and Ken Smith
 Tami Spaulding

Dorothy Spencer
 Karen and Kelly Spink
 Olga Spitsyna and Vladislav Shilo
 Emily and Kyle Steele
 Patty Stevens
 Sharron Stevens
 Homer Stewart
 Dawn Stottlemire
 Janice Stuber
 Paul Sullivan
 Jeffrey Sussman
 Kit Sutherland and Scott Kintz
 Carol and Jerry Swofford
 David Taylor
 Kim and Jesse Taylor
 Donald Thomas
 Andrea and Robert Thompson
 Carla Thompson
 Joyce Thompson-Kluherz
 Marta Thorne
 Ellen Thornwall
 Dorothy and Gary Thunquest
 Gene and Edward Thurber
 Valerie Todd
 Susan and William Tredennick
 Shauna and James Trzcinski
 RaeAnna and Sean Tucker
 Ann and Simon Turner
 Kari Turner and Christopher MacKay
 Marcia and Michael Unga
 Patricia and Jeff Van Bogaert
 Catherine Vance
 Louise and Douglas Vaske
 Lynn and Domenic Vecchio
 Debbie Vischer
 Kim Vrabel
 Vicki and Michael Wagner
 Fade Wall and Ben Hoover
 Jim and Nikki Watson
 Lisa Wegener
 Marcia and John Wells
 Mike Werzyn
 Thomas and Arvina Westcot
 Terry and Diane Wevers
 Ward and April Whicker
 Katherin White
 Lowen and Tamara Wiessenberger
 Nancy Wisnewski
 Jennifer and Kelvin Woelk
 Jaclyn Wray
 Samantha and Eric Yadav
 Richard Zelenka
 Anonymous (57)

**deceased*



OUR VOLUNTEERS

300+ hours donated

Cheryl Anderson	Denise Chapman	Debra Dorris	Cynthia Gilbert	Danielle Kayser	Krista Reeves	Kiyoka Tamesue	Kristine Witt
Harriet Anderson	Jacquie Colwell	Debra Eastberg	Elisa Gingrich	Sarah Lambert	Allison Rivas	Kayla Van Erdewyk	Vicki Wright
Tatjana Bakke	Stephanie Cox	Jennifer Everett	Tracey Haylock	Jessica Mildren	Susan Shattuck	Elaine Verduill	Ann Zollman
Diane Berg	Sarah Daley	Rebecca Finkel	Chelsea Hill	Ann O'Neill	Julie Smith	Shelley Waldron	
Marjorie Berger	Jody Deschenes	Donna Giddings	Gretchen Kastetter	Joan Raabe	Adele Tafoya-Ecker	Elaine Willis	

100-299 hours donated

Kaitlyn Almquist	Ingrid Chen	Kathy Dow	Anna Lane	Charlotte Mills	Bob Randall	Erin Statkus	Jessica Wallace
Nason Ashley	Paul Cheney	Melinda Frye	Marissa Lisi	Jessica Motherway	Sheri Roos	Meredith Steele	Karen Watanabe
Rebecca Baldasaro	Lauren Chiavetta	Jessica Gartner	Devon Little	Michelle Ogg	Catherine Sayers	Diana Stevens	Jim Watson
Patty Barnett	Liana Clark	Gary Graves	Mary Little	Margaret Olsen	Cheryl Scott	Heather Swigert	Wendy Woods
Judy Bennett	Kayla Cure	Julie Harvey	Julie Lyke	Cheri O'Neill	John Setzekorn	Jo Tatti	
Gloria Boland	Cynthia Dalbey	Jeannette Hoffman	Jennifer Maunsell	Patrick O'Neill	Prateek Sinha	Colleen Turay	
Alanna Brake	Kurt Davies	Geneve Huxley	Keith Meyer	Daniel Patrick	Kim Spencer	Thomas Turay	
Marcia Campion	Jim Dow	Janessa Landeck	Leland Miller	Ruth Pendergrast	Kyle Spencer	Debbie Vischer	

50-99 hours donated

Kathleen Allen	Robert Clark	Kerry Duncan	Mary Grupe	Wesley Johnson	Meaghan Maher	Madison Osborne	Meghan Shaw
Hope Anderson	Heidi Cooksey	Annie Eudeikis	Jacquelyn Hailey	Elisa Juhas	Cassandra McDonald	Macy Parrott	Lynn Stuart Hirai
Arnita Barclay	Michael Costello	Liv Everett	Twila Hamel	Leslie Kennedy	Lucia Meester	Patrica Peter	Allen Turner
Rebekkah Beeco	Marshall Curtis	Mallory	Laura Harris	Debbie Kepler	Amanda Melendez	Donald Petter	Mica Vanderwarf
Katherine Belford	Nicole De	Farokhmanesh	Katherine Hinds	Christine Kopral	Cindy Millard	Cynthia Pittman	Abbey Willison
Paul Birdsall	Haven-Malik	Alyssa Fournier	Kayla Horne	Kathy Kregel	Carri Miller	Erika Scheider	Elizabeth Worsham
Emilee Brink	Scott Desrosiers	Christopher Fournier	Sasha Hunter	Christine Labin	David Millhausen	Fred Schrekinger	
Judy Brobst	Emi Doyle	Sheryl Gintner	Diane Hutchinson	Chris Langius	Gage Mofield	Cheryl Sedlacek	
Gerald Chen	Marnie Doyle	Jill Grizzle	Payton Jamison	Steve Lucas	Laura Olson	Jonathon Semonchick	

1-49 hours donated

Megan Ackerman	Angela Brill	Mickie Doherty	Ava Grothmann	Rasmus Knobbe	Carie Moen	Sara R Wilson	Lilah Strote
Marcia Adams	Maele Brill	JoAnna Doty	Akshat Gudidevuni	Vicky Komrmusch	Natalie Moorcroft	Anna Ramsey	Mary Stulz
Wendy Allen	Dale Brinker	William Duncan	Ashmita Gudidevuni	Allison Korleski	Michelle Moran	Amelie Ravnsborg	Richard Styer
Susan Allison	Hailey Brown	Debra Dyas	Ashwin Gudidevuni	Jennifer Krankota	Jean Moses	Connie Reding	Marian Talbert
John Alsbrooks	Anely Bruno	Sally Ebeling	Isaac Gutcher	Ded Kraxberger	Devin Mosswood	Joe Reding	Lesli Tanski
Zoey Alsbrooks	Chase Bryant	Wendy Egbert	Kristina Halliman	Ryan Kriva	Noah Myers	Erik Reifschneider	Dominic Tatti
Gwendolyn Anderson	Isabelle Cabrera	Clint Elkins	Beverly Hansen	Vickie Kuhlmann	Tracy Nash	Arianna Rettenberger	Lily Tees
Heather Anderson	Elisabeth Callahan	Emily Elliott	Ellory Hansen	Sevigne Kulbacki	Paulette Neas	Shayla Riccio	Marco Teixeira
Ashely Arthur	Lu Callahan	Sarah Elliott	Angelina	Joshua Langius	Wallace Neas	Brooke Ridder	Lauren Thomas
Katherine Austin-Groen	Lani Campbell	Taylor Elrod	Hardegree-Ullman	Morgan Lanzi	Daniel Nedwich	Tammy Rife	Serena Thomas
Marlowe Austin-Groen	Bella Cano	Jude Eltermam	Geoff Harden	Jennifer LaShell	Lauren Nelson	Marina Rodriguez	Michael Tinnin
Alivia Bailey	Leah Cano	Kimberly Elterman	Sienna Harden	Katie LaShell	Greta Newman	Susan	Adam Trousil
Carolyn Bailey	Karen Carlson	Danette Ericson	Senessa Hart	Jake Laterbach	Jen Newman	Rostvedt-Johnson	Susan Tsunoda
Caitlin Baker	Lauren Carney	Emilia Ericson	Jill Hartman	Molly Laterbach	Samantha Niccolai	Anna Roussel	Elif Turner
Jake Barela	Lexi Carwin	Jaelei Fallas	Kendall	Jacki Lawson	Jeannette Nichol	Adam Rowh	Madison Turner
Paige Barela	Savannah Cell	Jurguen Fallas	Haslund-Nielsen	Madison Lawson	Aspen Nielsen	Emmett Rowh	Jacqueline
Tyson Barela	Laura Chapman	Linda Felz	Anne Hastings	Nero LeGath	Corey Nielsen	Marta Rowh	Valenzuela
Cynthia Bass	Mark Cheesbrough	Megan Fisher	Maelan Hauswirth	Michele Lier	Faith Nielsen	Jasmine Ruffin	Madison Van
Lyla Bass	Michael Chigro	Billie Fogarty	Ann Herzog	Penny Linn	Makana Nielsen	Diego Ruiz	Herzele
Heidi Bates	Alexandra Chrostowski	Jessica Galimore	Jane Hillhouse	Melinda Luckey	Charlotte Nolan	Santiago Ruiz	Alexandria Varela
Ashley Battaglia	Roberta Cipriano	Jacqueline Garcia	Christina Hintz	Rebecca Luna	Diane O'Brien	Luisa Salas	Stephanie Wagner
Jane Baumgart	Barbara Clayton	Gwen Garrison	Emily Hofer	Patti Lynch	Jaimie Olson	Elainah Salazar	Saturn Warren
Amelia Beatty	Kenneth Conk	Alisa Gaston-Linn	Valerie Hunter-Goss	Ann Magennis	Erika Orion	Caitlin Sangalis	Tina Warren
Deborah Beatty	Julietta Cos	Lytic Geiger	Bruce Isabella	Caela Manley	Kerry O'Sullivan	Mila Schneider	David Wasson
Lacey Berg	Tessa Coultas	Lea Giacchetta	Jason Jambor	Vivian Mares	Jamie Parker	Linda Schuh	Kylie Weaver
Judy Berganini	Rebecca Cox	Colleen Gilmore	Emma Kaiser	Elizabeth Martin	Terri Paschetag	Teia Schweizer	Richard Weaver
Nara Berlin	Jan Cross	Lizzy Ginger	Sandra Kaline	Rebecca Martin	Stephanie Pearce	Nix Scott	Reagan Weichold
Finnegan Berning	Vivien Crutcher	Amy Glessing	Meghan Kalisek	Barb Massey	David Persons	Summer Scott	Allison Weiss
Janice Berning	Eileen Crystal	Alyssa Goedeker	Zane Kathan	Emily McCall	Kathleen Petersen	Alaire Serell	Janet Werst
Payton Berning	Peyton Cunningham	Haleigh Gonzalez	Nance Kelly	Richard McCombs	Sierra Pierce	Tiffany Serell	Arvin Westcot
Kathy Bingaman	Kaitlyn Dell	Victoria Gorton	Brady Kenney	Lauren McDonough	Kristen Polson	Carla Shaffer	Brooke Wilf
Noel Black	Elizabeth DeMarco	Amy Goth	Matthew Kenney	Elinor McMeeking	Aidan Pontes	Kaitlyn Shellenberger	Mia Winterhalder
Kaylie Bonnema	Diane Desrosier	Jessica Grady	Kelani Kephart	Laura McMeeking	Colleen Pontes	James Smith	Haley Wolfing
Ava Bowers	Skyler Dessorich	Hannah Grant	Naomi Kephart	Christie McPhail	Jeffrey Pontes	Jessica Sorensen	Jane Wright
Ryder Bowers	Elizabeth Dickson	Kayla Green	Sam Kephart	Ian McPhail	Thomas Poteet	Ella Stewart	Karen Yang
Sabrina Boyer	Samuel Dickson	Richard Greenberg	Michaela Kimbrough	Sara Melena	Heather Price	Kimberly Stewart	Laurie Zenner
Dagny Brault	Carol Dochen	Nevaeh Greene	Pam Klein	Alix Messer	Alyssa Procopio	Erika Strote	Yichen Zhang
Stephanie Brault	Chloe Doherty	Angie Grothmann	Mackensie Knobbe	Caitlyn Miller	Annalieve Pulliam	Justin Strote	

EXECUTIVE STAFF

JUDY CALHOUN, CFRE, CAWA
Chief Executive Officer

JEN VALENTINE
Director of Operations

TRACIE THOMPSON
Director of Finance

JEAN MOONEY, PHR
Director of Human Resources

AMANDA MYERS, MPA
Director of Development & Community Relations

RIGO NEIRA
Director of Animal Protection & Control



LARIMERHUMANESOCIETY

LARIMERHUMANE.ORG

970.226.3647

**3501 E 71ST STREET
LOVELAND, CO 80538**


BOARD OF DIRECTORS

GENEVÉ HUXLEY	Vice Chair <i>April 2022 – March 2023</i> Chair <i>April 2023 – Current</i>
MARGARET OLSEN	Chair <i>April 2022 – March 2023</i>
TED RAY	Vice Chair <i>April 2023 – July 2023</i>
JIM WATSON	Treasurer <i>April 2022 – September 2022</i>
WENDY WOODS	Treasurer <i>October 2022 – Current</i>
PATRICK O'NEILL	Secretary <i>April 2022 – Current</i>
KATHERINE BELFORD	Member
PAUL BIRDSALL	Member
GERALD CHEN	Member
MIKE COSTELLO	Member
MELINDA FRYE	Member
HALEIGH GONZALEZ	Member
JILL GRIZZLE	Member
KATHY KREGEL	Member
KEITH MEYER	Member
CHERÍ O'NEILL	Member
SUSAN SHATTUCK	Member
JO TATTI	Member




 [facebook.com/
larimerhumane](https://facebook.com/larimerhumane)

 [twitter.com/
larimerhumane](https://twitter.com/larimerhumane)

 [youtube.com/
larimerhumane](https://youtube.com/larimerhumane)

 [instagram.com/
larimerhumanesociety](https://instagram.com/larimerhumanesociety)

 Join our email list:
larimerhumane.org